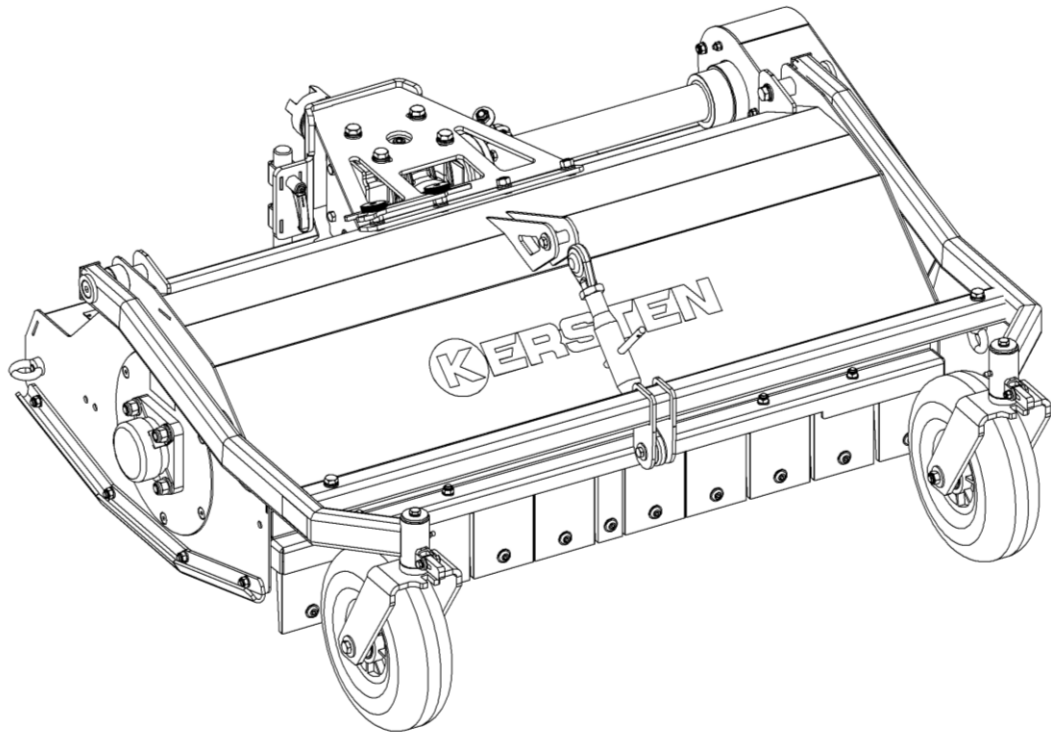




Spare Parts List

Horizontal- Flail Mower for UBS

SCHLM 065 II MU 70 | 090 II MU 70
SCHLM 100 II MU 70 | SCHLM 120 II MU 70



Order number: E00138

from machine number: 72411

Rev.: R05

Status: October 1, 2024

Kersten
SITE MAINTENANCE EQUIPMENT

KERSTEN (UK) LTD

0118 9869 253 | kerstenuk.com

Office@kerstenuk.com

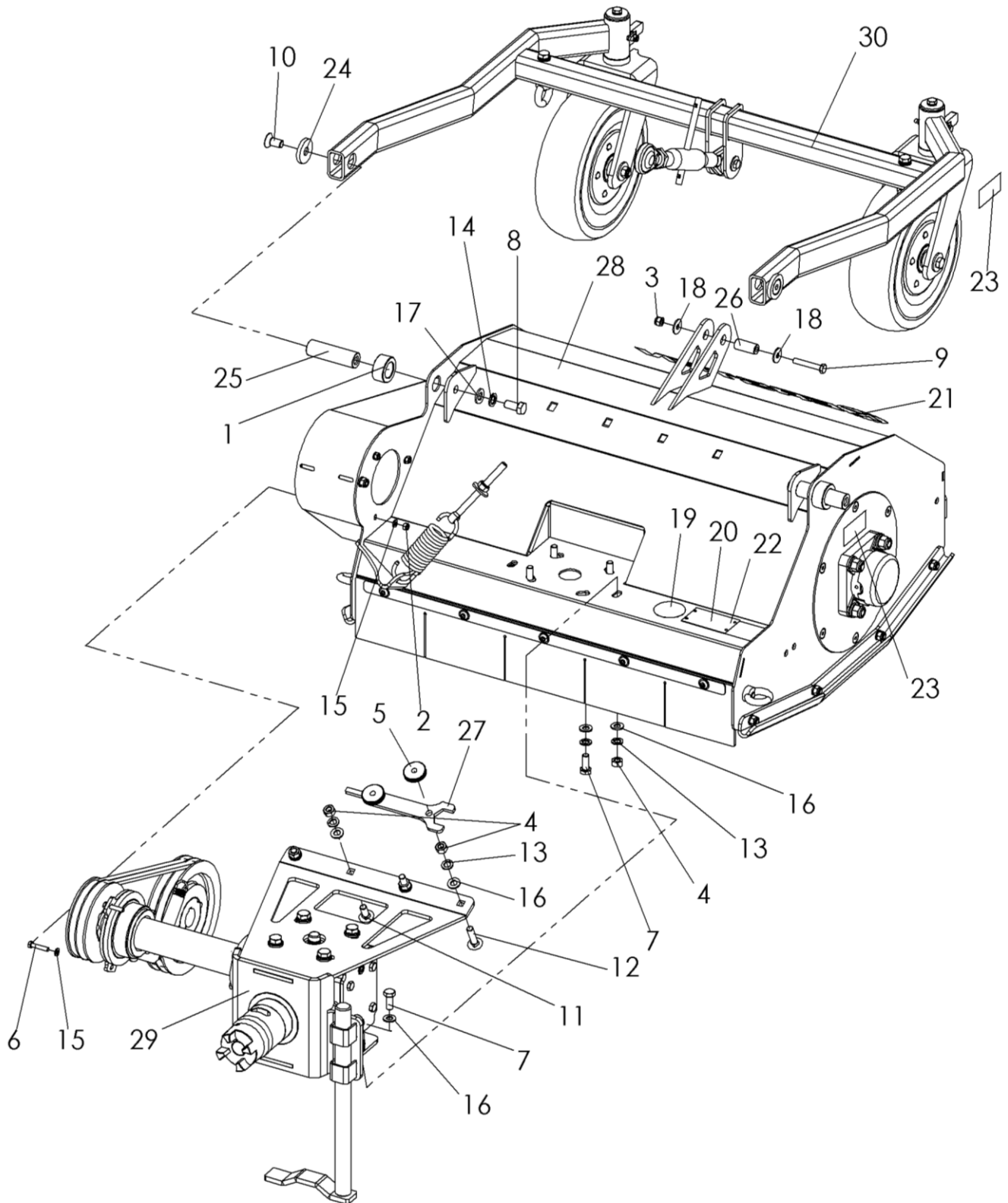
39 Boulton Road, Reading, Berkshire, RG2 0NH

table of contents

1	ASSEMBLY	3
1.1	Mounted flail mower SCHLM 065 II MU 70 – S1390	3
1.2	Mounted flail mower SCHLM 090 II MU 70 – S1020	5
1.3	Mounted flail mower SCHLM 100 II MU 70 - S1019 7	
1.4	Mounted flail mower SCHLM 120 II MU 70 - S1021 9	
2	COMPONENT OVERVIEW	11
2.1	Flail housing assembly	11
2.1.1	Flail housing 065 AB - C13915	11
2.1.2	Flail housing 090 AB - C12250	13
2.1.3	Flail housing 100 AB - C12241	15
2.1.4	Flail housing 120 AB - C12251	17
2.2	Drivetrain with MA 28 gearbox - assembly	19
2.2.1	Drivetrain 065 AB - Variant A- C15112	19
2.2.2	Drivetrain 090 AB - Variant A - C12248	21
2.2.3	Drivetrain 100 AB - Variant A - C12242	23
2.2.4	Drivetrain 120 AB - Variant A - C12249	25
2.3	Wheel holder assembly	27
2.3.1	Wheel holder 065 AB – C15180	27
2.3.2	Wheel holder 090 AB – C12252	29
2.3.3	Wheel holder 100 AB – C12243.....	31
2.3.4	Wheel holder 120 AB – C12253	33
2.4	Fine-cut flail set assembly	35
2.4.1	FINE GRINDING SET 065 AB – S1384	35
2.4.2	FINE GRINDING SET 090 AB – S1275	35
2.4.3	FINE GRINDING SET 100 AB – S1276	35
2.4.4	FINE GRINDING SET 120 AB – S1277	35
2.5	Coarse cutting flail set assembly	36
2.5.1	GROBSCHLE SET 065 AB – S1383	36
2.5.2	GROBSCHLE SET 090 AB – S1278	36
2.5.3	GROBSCHLE SET 100 AB – S1279	36
2.5.4	GROBSCHLE SET 120 AB – S1280	36
3	ACCESSORIES	37
3.1	Follower roller assembly	37
3.1.1	Roller for SCHLM 065 M-U70 – S1389	37
3.1.2	Roller for SCHLM 090 M-U70 – S1281	37
3.1.3	Roller for SCHLM 100 M-U70 – S1282	38
3.1.4	Roller for SCHLM 120 M-U70 – S1283	38

1 assembly

1.1 Mounted flail mower SCHLM 065 II MU 70 - S1390

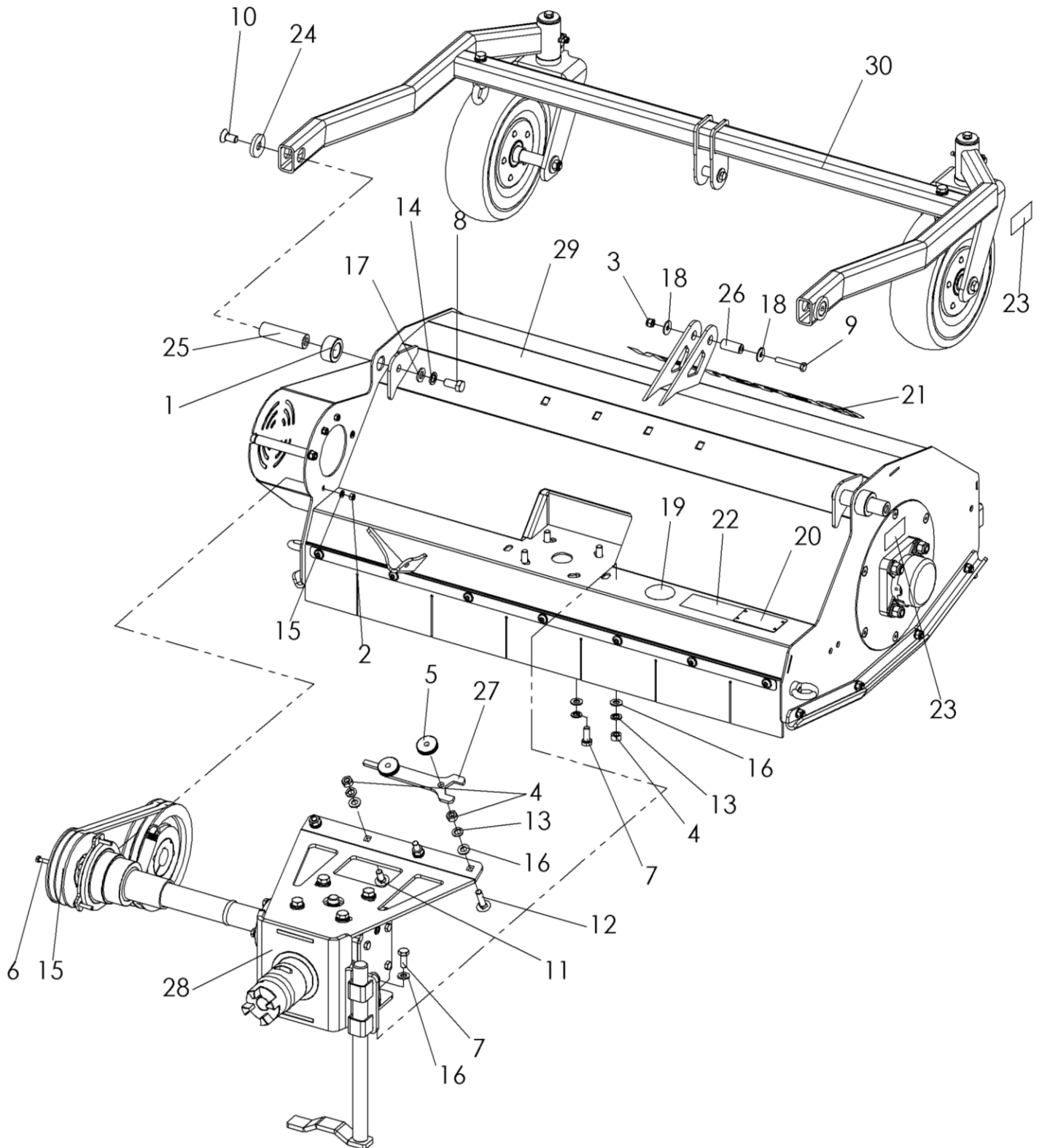


SCHLM 065 II MU 70 - S1390

No.	Art.-No.	No.	designation
1	713 020 040	2	socket
2	900 006 002	3	lock nut
3	900 008 002	1	lock nut
4	900 010 001	6	Skt.-Mutter
5	900 010 200	2	knurled nut
6	901 006 030	3	hexagon screw without shaft
7	901 010 025	6	hexagon screw without shaft
8	901 012 025	2	hexagon screw without shaft
9	901 108 050	1	hexagon screw with shaft
10	901 212 025	2	Countersunk screw with hexagon socket
11	901 910 025	2	carriage bolt
12	901 910 040	2	carriage bolt
13	905,010,000	10	spring ring
14	905 012 000	2	spring ring
15	905,106,000	6	U-disk
16	905,110,000	12	U-disk
17	905,112,000	2	U-disk
18	905 208 025	2	K-disk
19	950 900 023	1	mandatory sign hearing protection
20	950 900 070	1	type plate - Kersten
21	950 900 085	1	Kersten stickers
22	950 900 090	1	safety stickers
23	999,049,000	4	sticker lubrication point
24	C06376	2	cover plate
25	C11371	2	Bolt Ø25 x 84lg.
26	C11603	1	bolt
27	C11605	1	tool top link
28	C13915	1	flail housing 065 AB
29	C15112	1	Drivetrain 065 AB - MA20 & MA28 Gearbox Assembly
30	C15180	1	wheel holder 065 AB assembly

S

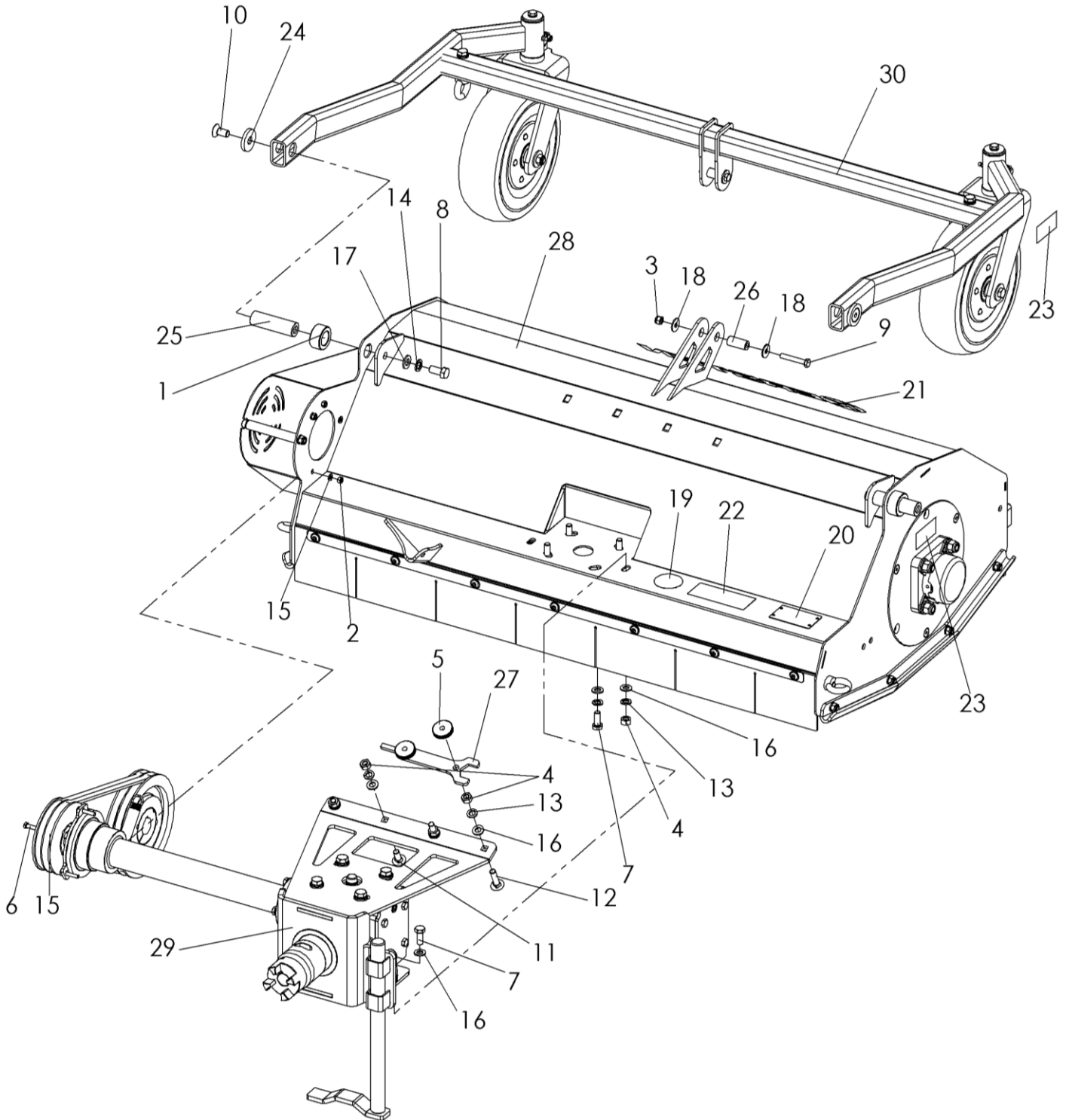
1.2 Mounted flail mower SCHLM 090 II MU 70 - S1020



mounted flail mower SCHLM 090 II MU 70 - S1020

No.	Art.-No.	No.	designation
1	713 020 040	2	socket
2	900 006 002	3	lock nut
3	900 008 002	1	lock nut
4	900 010 001	6	Skt.-Mutter
5	900 010 200	2	knurled nut
6	901 006 030	3	hexagon screw without shaft
7	901 010 025	6	hexagon screw without shaft
8	901 012 025	2	hexagon screw without shaft
9	901 108 050	1	hexagon screw with shaft
10	901 212 025	2	Countersunk screw with hexagon socket
11	901 910 025	2	carriage bolt
12	901 910 040	2	carriage bolt
13	905,010,000	10	spring ring
14	905 012 000	2	spring ring
15	905,106,000	6	U-disk
16	905,110,000	12	U-disk
17	905,112,000	2	U-disk
18	905 208 025	2	K-disk
19	950 900 023	1	mandatory sign hearing protection
20	950 900 070	1	type plate - Kersten
21	950 900 085	1	Kersten stickers
22	950 900 090	1	safety stickers
23	999,049,000	4	sticker lubrication point
24	C06376	2	cover plate
25	C11371	2	Bolt Ø25 x 84lg.
26	C11603	1	bolt
27	C11605	1	tool top link
28	C12248	1	Drivetrain 090 AB - MA20 & MA28 Transmission
29	C12250	1	flail housing 090 AB
30	C12252	1	wheel holder 090 AB assembly

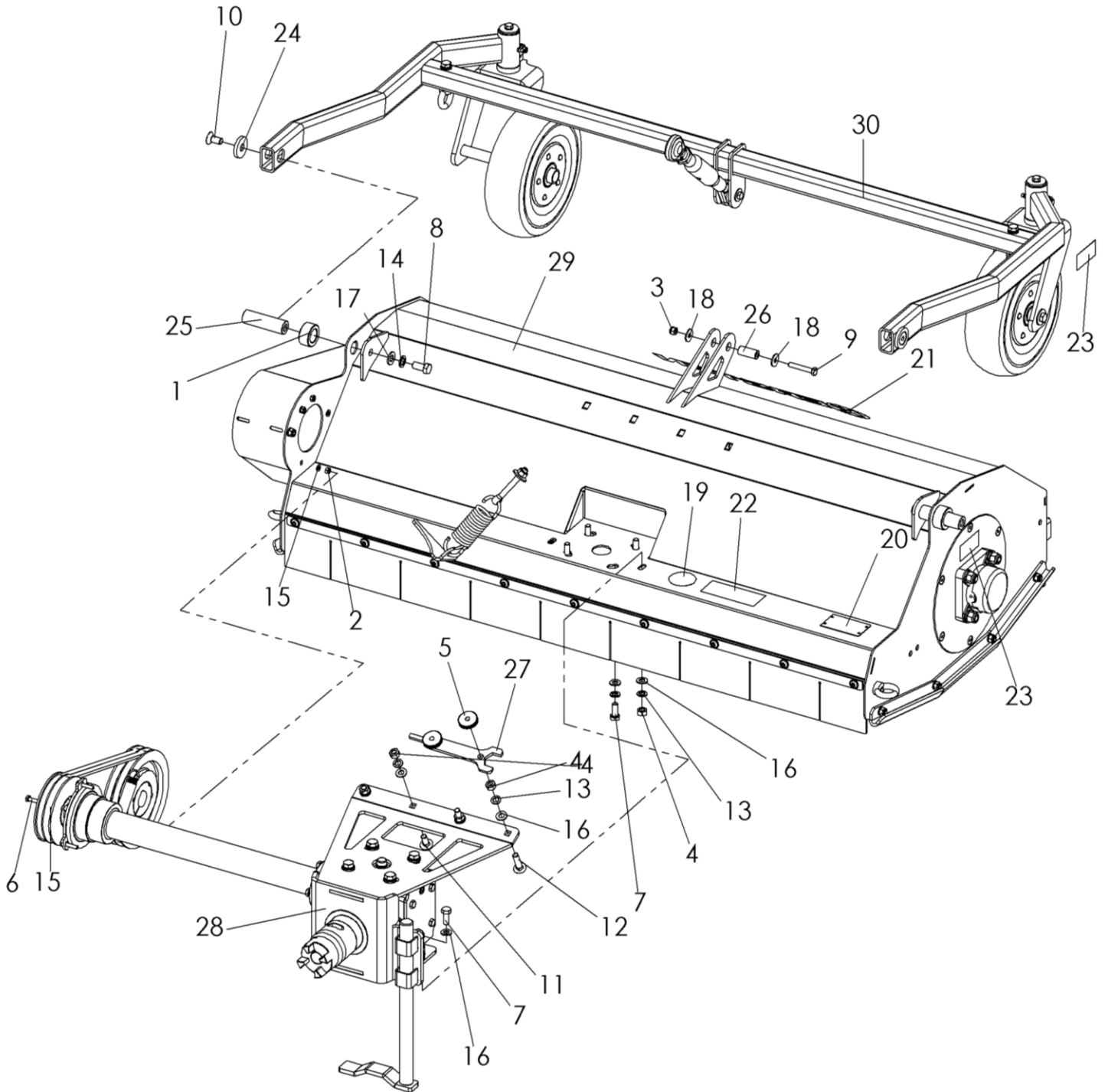
1.3 Mounted flail mower SCHLM 100 II MU 70 - S1019



mounted flail mower SCHLM 100 II MU 70 - S1019

No.	Art.-No.	No.	designation
1	713 020 040	2	socket
2	900 006 002	3	lock nut
3	900 008 002	1	lock nut
4	900 010 001	6	Skt.-Mutter
5	900 010 200	2	knurled nut
6	901 006 030	3	hexagon screw without shaft
7	901 010 025	6	hexagon screw without shaft
8	901 012 025	2	hexagon screw without shaft
9	901 108 050	1	hexagon screw with shaft
10	901 212 025	2	Countersunk screw with hexagon socket
11	901 910 025	2	carriage bolt
12	901 910 040	2	carriage bolt
13	905,010,000	10	spring ring
14	905 012 000	2	spring ring
15	905,106,000	6	U-disk
16	905,110,000	12	U-disk
17	905,112,000	2	U-disk
18	905 208 025	2	K-disk
19	950 900 023	1	mandatory sign hearing protection
20	950 900 070	1	type plate - Kersten
21	950 900 085	1	Kersten stickers
22	950 900 090	1	safety stickers
23	999,049,000	4	sticker lubrication point
24	C06376	2	cover plate
25	C11371	2	Bolt Ø25 x 84lg.
26	C11603	1	bolt
27	C11605	1	tool top link
28	C12241	1	flail housing 100 AB
29	C12242	1	Drivetrain 100 AB - MA20 & MA28 Gearbox Assembly
30	C12243	1	wheel holder 100 AB assembly

1.4 Mounted flail mower SCHLM 120 II MU 70 - S1021



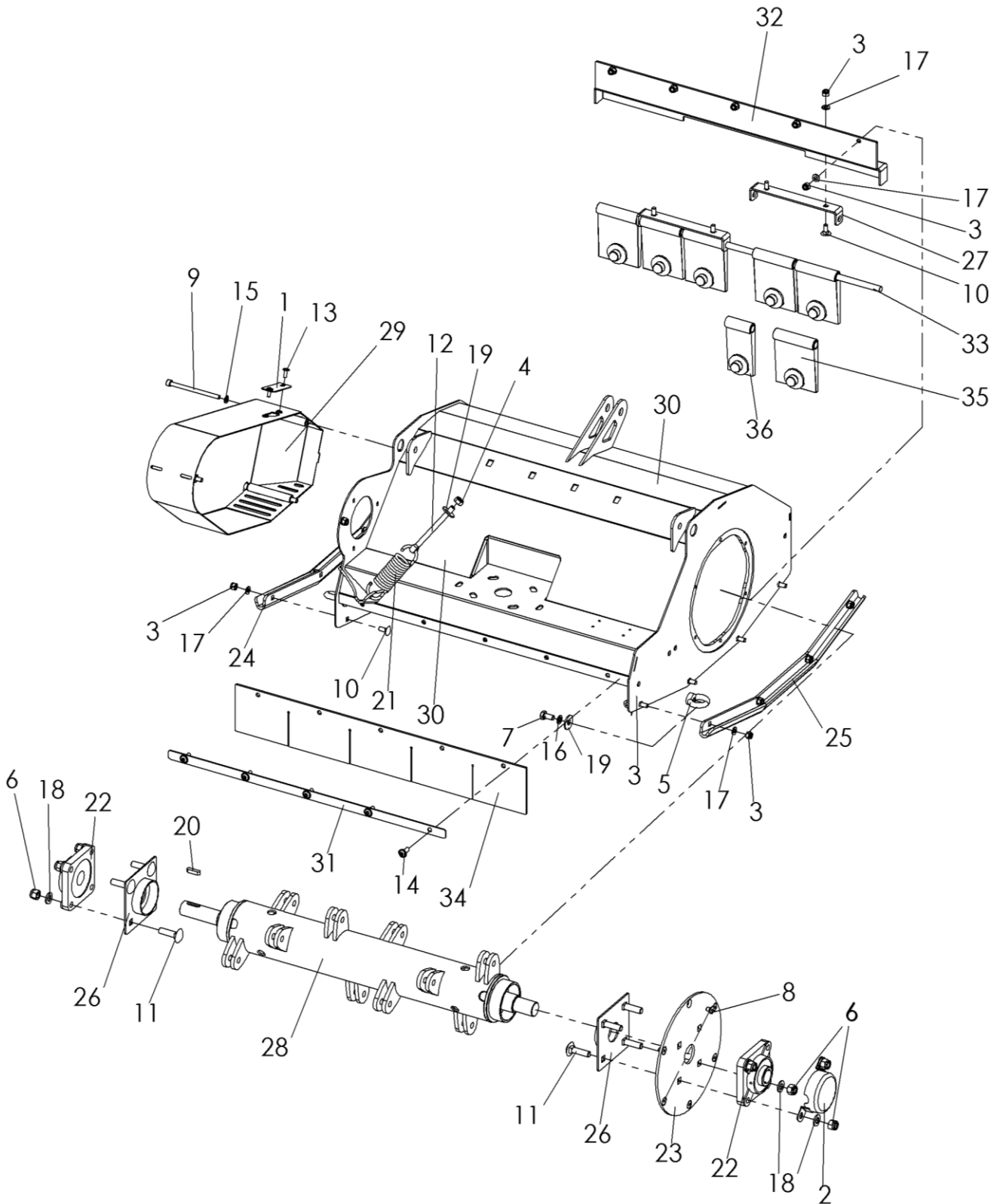
mounted flail mower SCHLM 120 II MU 70 - S1021

No.	Art.-No.	No.	designation
1	713 020 040	2	socket
2	900 006 002	3	lock nut
3	900 008 002	1	lock nut
4	900 010 001	6	Skt.-Mutter
5	900 010 200	2	knurled nut
6	901 006 030	3	hexagon screw without shaft
7	901 010 025	6	hexagon screw without shaft
8	901 012 025	2	hexagon screw without shaft
9	901 108 050	1	hexagon screw with shaft
10	901 212 025	2	Countersunk screw with hexagon socket
11	901 910 025	2	carriage bolt
12	901 910 040	2	carriage bolt
13	905,010,000	10	spring ring
14	905 012 000	2	spring ring
15	905,106,000	6	U-disk
16	905,110,000	12	U-disk
17	905,112,000	2	U-disk
18	905 208 025	2	K-disk
19	950 900 023	1	mandatory sign hearing protection
20	950 900 070	1	type plate - Kersten
21	950 900 085	1	Kersten stickers
22	950 900 090	1	safety stickers
23	999,049,000	4	sticker lubrication point
24	C06376	2	cover plate
25	C11371	2	Bolt Ø25 x 84lg.
26	C11603	1	bolt
27	C11605	1	tool top link
28	C12249	1	Drivetrain 120 AB - MA20 & MA28 transmission
29	C12251	1	flail housing 120 AB
30	C12253	1	wheel holder 120 AB assembly

2 assembly overview

2.1 Flail housing assembly

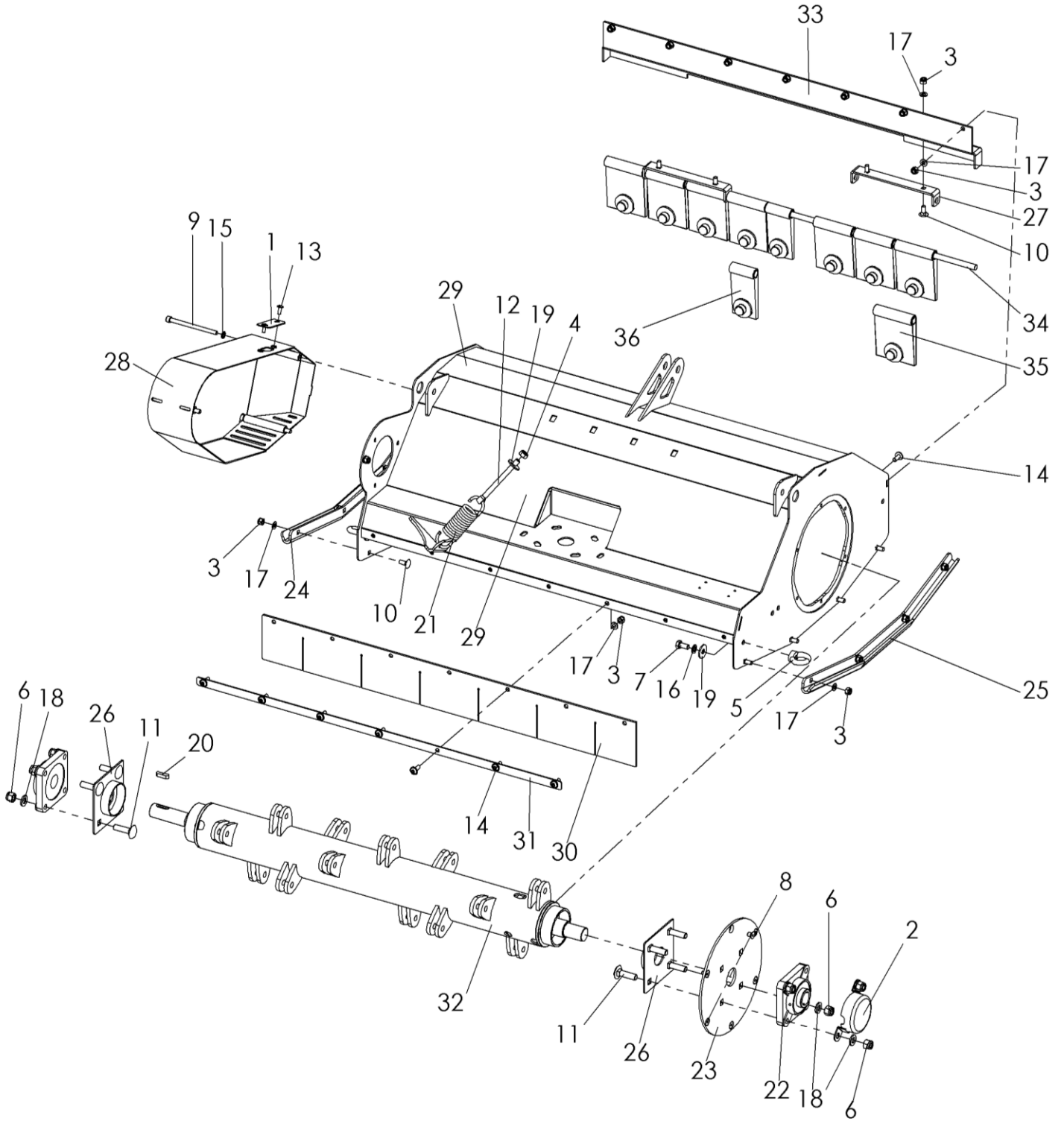
2.1.1 Flail housing 065 AB - C13915



flail housing 065 AB - C13915

No.	Art.-No.	No.	designation
1	765 000 016	1	blind cover
2	765,000,046	1	bearing cover compl.
3	900 008 002	23	lock nut
4	900 010 002	1	lock nut
5	900 010 017	2	ring nut
6	900 012 002	8	lock nut
7	901 010 020	2	hexagon screw without shaft
8	901 208 012	6	Countersunk screw with hexagon socket
9	901 808 115	3	Cylinder head screw with hexagon socket
10	901 908 020	12	carriage bolt
11	901 912 045	8	carriage bolt
12	903 010 120	1	eyebolt
13	903 906 016	2	Lens head screw with hexagon socket
14	903 908 020	10	Lens head screw with hexagon socket
15	905 008 000	3	spring ring
16	905,010,000	2	spring ring
17	905,108,000	23	U-disk
18	905,112,000	8	U-disk
19	905,210,000	3	K-disk
20	908 008 730	1	feather key
21	909 200 130	1	tension spring
22	924 110 206	2	flange bearings
23	C10823	1	bearing plate for side cover
24	C10872	1	left runner
25	C10873	1	right runner
26	C10961	2	Winding protection complete
27	C11194	2	mounting bracket plastic flaps
28	C11287	1	flail shaft 65 AB
29	C12048	1	belt cover
30	C13916	1	flail housing 65 AB
31	C13918	1	screw-on strip 65 AB
32	C13919	1	Screw-on strip for plastic flaps 65AB
33	C13920	1	shaft 65 AB
34	C13921	1	rear splash guard 65AB
35	M00135	6	plastic flap pre-assembled
36	M00137	1	plastic flap pre-assembled

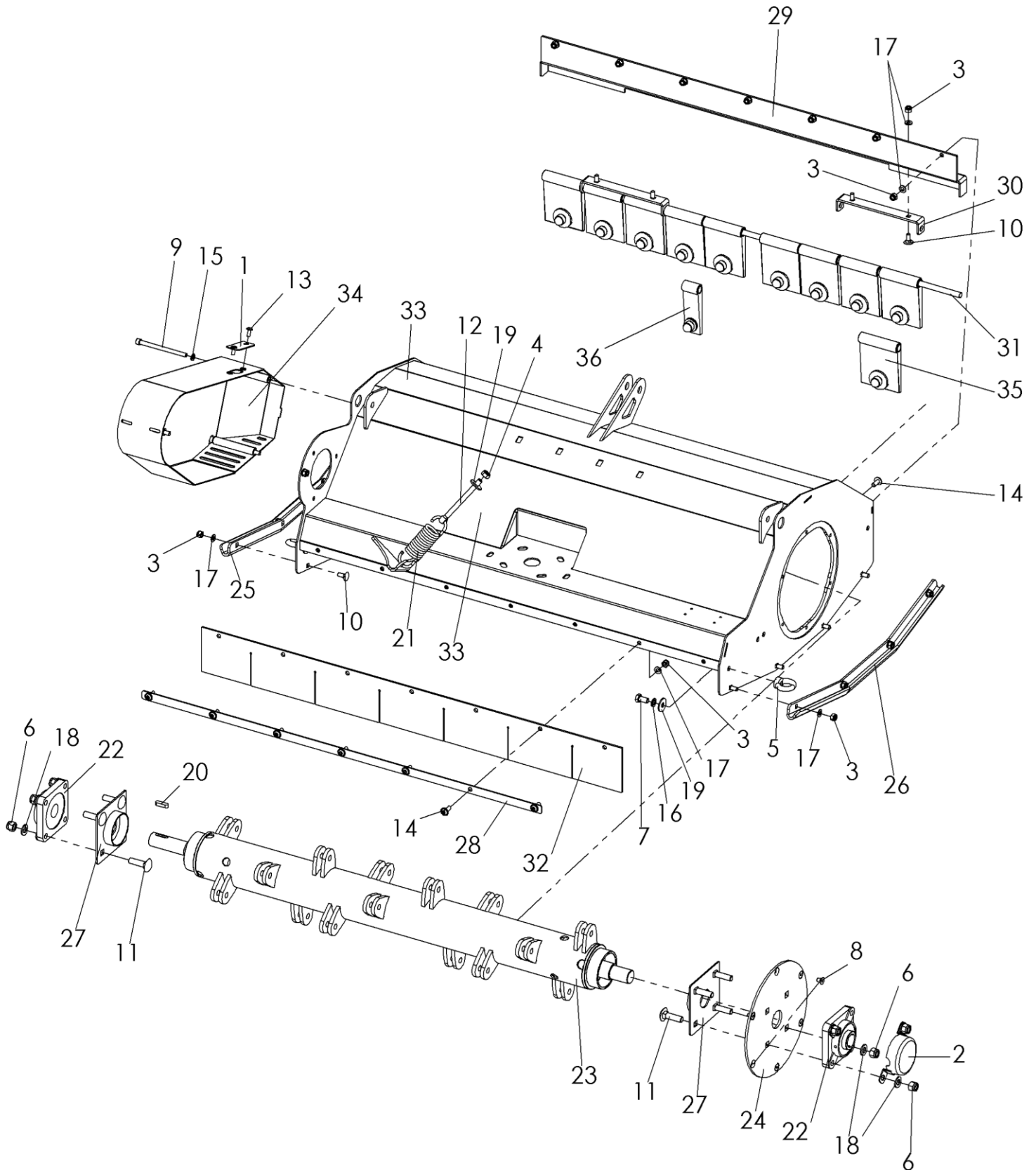
2.1.2 Flail housing 090 AB - C12250



flail housing 090 AB - C12250

No.	Art.-No.	No.	designation
1	765 000 016	1	blind cover
2	765,000,046	1	bearing cover compl.
3	900 008 002	27	lock nut
4	900 010 002	1	lock nut
5	900 010 017	2	ring nut
6	900 012 002	8	lock nut
7	901 010 020	2	hexagon screw without shaft
8	901 208 012	6	Countersunk screw with hexagon socket
9	901 808 115	3	Cylinder head screw with hexagon socket
10	901 908 020	12	carriage bolt
11	901 912 045	8	carriage bolt
12	903 010 120	1	eyebolt
13	903 906 016	2	Lens head screw with hexagon socket
14	903 908 020	14	Lens head screw with hexagon socket
15	905 008 000	3	spring ring
16	905,010,000	2	spring ring
17	905,108,000	27	U-disk
18	905,112,000	8	U-disk
19	905,210,000	3	K-disk
20	908 008 730	1	feather key
21	909 200 130	1	tension spring
22	924 110 206	2	flange bearings
23	C10823	1	bearing plate for side cover
24	C10872	1	left runner
25	C10873	1	right runner
26	C10961	2	Winding protection complete
27	C11194	2	mounting bracket plastic flaps
28	C12048	1	belt cover
29	C12254	1	flail housing 90 AB
30	C12257	1	rear splash guard 90AB
31	C12258	1	screw-on strip 90 AB
32	C12265	1	flail shaft 90 AB
33	C12268	1	Screw-on strip for plastic flaps 90AB
34	C12269	1	shaft Ø12 90 AB
35	M00135	8	plastic flap pre-assembled
36	M00137	2	plastic flap pre-assembled

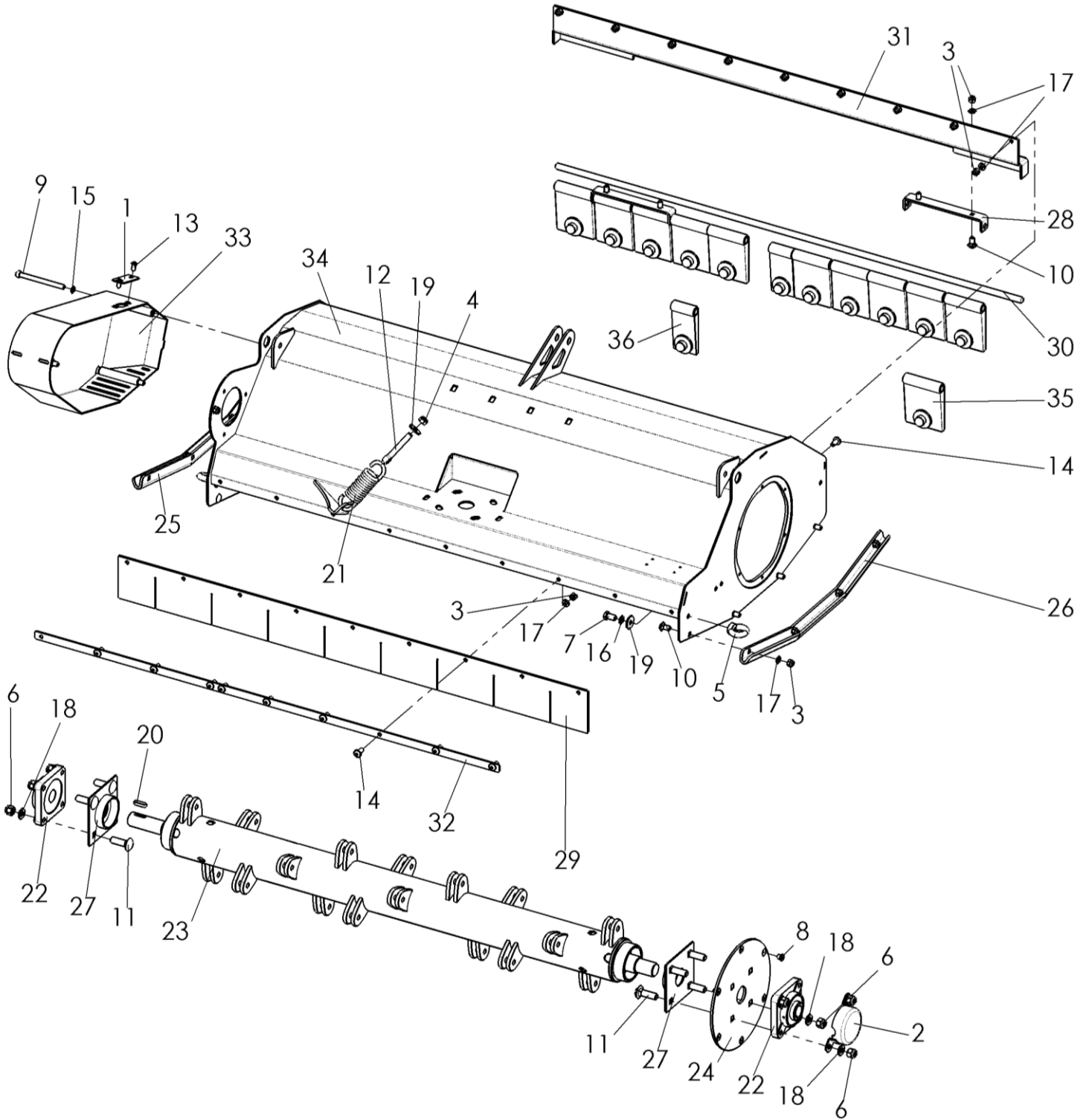
2.1.3 Flail housing 100 AB - C12241



flail housing 100 AB - C12241

No.	Art.-No.	No.	designation
1	765 000 016	1	blind cover
2	765,000,046	1	bearing cover compl.
3	900 008 002	27	lock nut
4	900 010 002	1	lock nut
5	900 010 017	2	ring nut
6	900 012 002	8	lock nut
7	901 010 020	2	hexagon screw without shaft
8	901 208 012	6	Countersunk screw with hexagon socket
9	901 808 115	3	Cylinder head screw with hexagon socket
10	901 908 020	12	carriage bolt
11	901 912 045	8	carriage bolt
12	903 010 120	1	eyebolt
13	903 906 016	2	Lens head screw with hexagon socket
14	903 908 020	14	Lens head screw with hexagon socket
15	905 008 000	3	spring ring
16	905,010,000	2	spring ring
17	905,108,000	27	U-disk
18	905,112,000	8	U-disk
19	905,210,000	3	K-disk
20	908 008 730	1	feather key
21	909 200 130	1	tension spring
22	924 110 206	2	flange bearings
23	C10055	1	flail shaft 100 AB
24	C10823	1	bearing plate for side cover
25	C10872	1	left runner
26	C10873	1	right runner
27	C10961	2	Winding protection complete
28	C11139	1	screw-on strip 100AB
29	C11190	1	Screw-on strip for plastic flaps 100AB
30	C11194	2	mounting bracket plastic flaps
31	C11390	1	shaft Ø12 100AB
32	C11391	1	rear splash guard 100AB
33	C12008	1	flail housing 100 AB
34	C12048	1	belt cover
35	M00135	10	plastic flap pre-assembled
36	M00136	1	plastic flap pre-assembled

2.1.4 Flail housing 120 AB - C12251

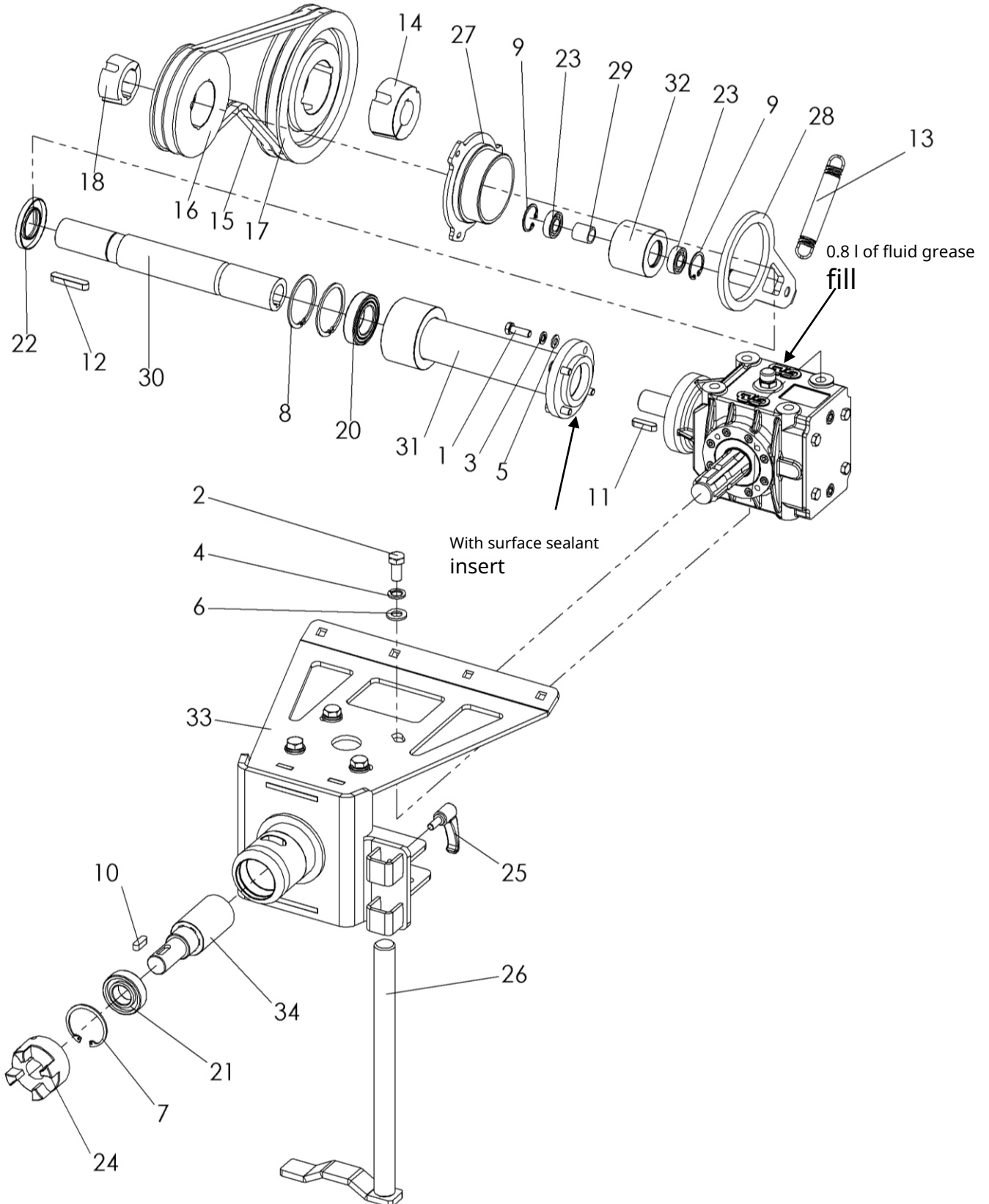


flail housing 120 AB - C12251

No.	Art.-No.	No.	designation
1	765 000 016	1	blind cover
2	765,000,046	1	bearing cover compl.
3	900 008 002	31	lock nut
4	900 010 002	1	lock nut
5	900 010 017	2	ring nut
6	900 012 002	8	lock nut
7	901 010 020	2	hexagon screw without shaft
8	901 208 012	6	Countersunk screw with hexagon socket
9	901 808 115	3	Cylinder head screw with hexagon socket
10	901 908 020	12	carriage bolt
11	901 912 045	8	carriage bolt
12	903 010 080	1	eyebolt
13	903 906 016	2	Lens head screw with hexagon socket
14	903 908 020	18	Lens head screw with hexagon socket
15	905 008 000	3	spring ring
16	905,010,000	2	spring ring
17	905,108,000	31	U-disk
18	905,112,000	8	U-disk
19	905,210,000	3	K-disk
20	908 008 730	1	feather key
21	909 200 130	1	tension spring
22	924 110 206	2	flange bearings
23	C10053	1	flail shaft 120 AB
24	C10823	1	bearing plate for side cover
25	C10872	1	left runner
26	C10873	1	right runner
27	C10961	2	Winding protection complete
28	C11194	2	mounting bracket plastic flaps
29	C11689	1	rear splash guard 120AB
30	C11690	1	shaft Ø12 120AB
31	C11691	1	Screw-on strip for plastic flaps 120AB
32	C11695	1	screw-on strip 120 AB
33	C12048	1	belt cover
34	C12235	1	flail housing 120 AB
35	M00135	11	plastic flap pre-assembled
36	M00137	2	plastic flap pre-assembled

2.2 Drivetrain with MA 28 gearbox - assembly

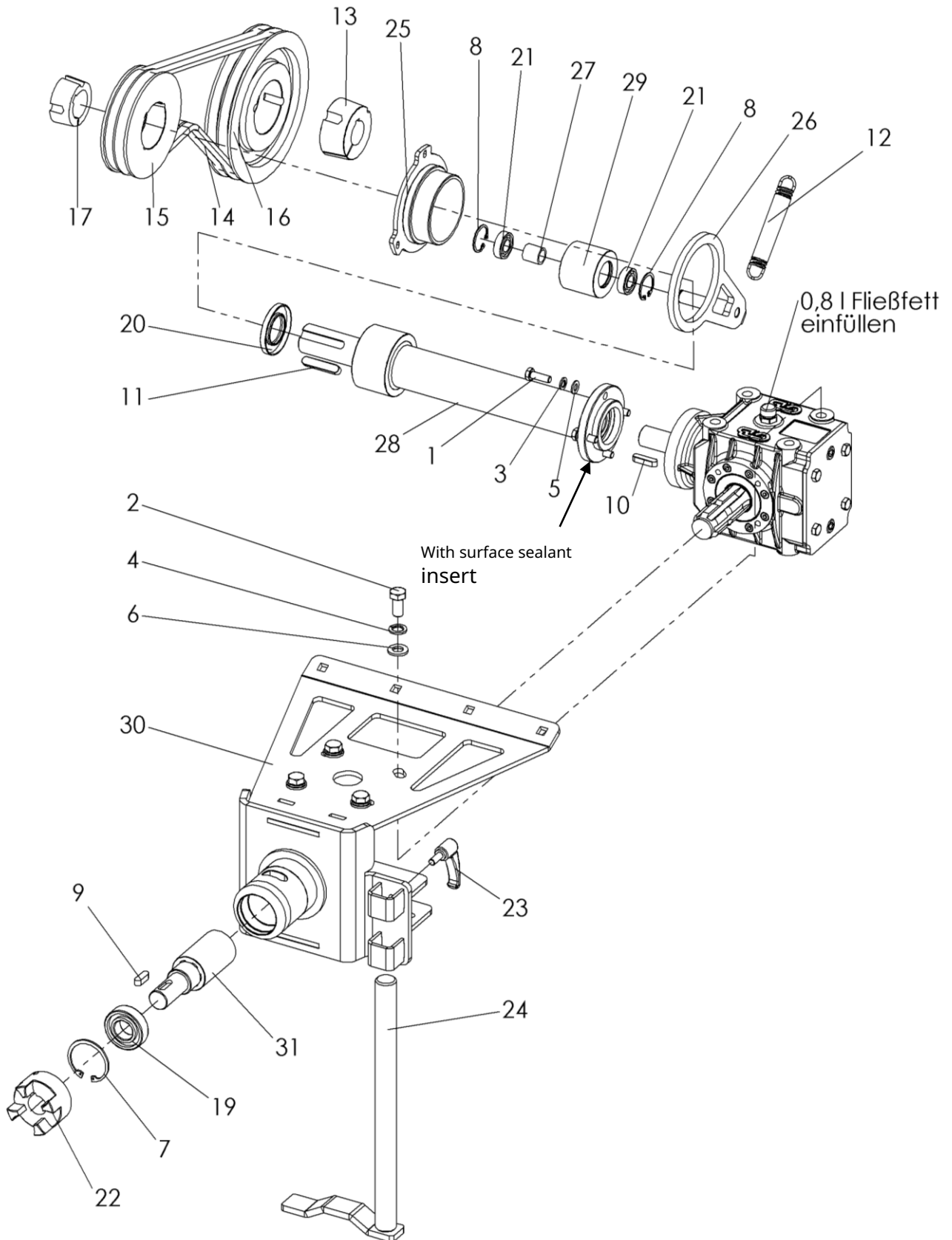
2.2.1 Drivetrain 065 AB - Variant A- C15112



Drivetrain 065 AB – Variant A - C15112

No.	Art.-No.	No.	designation
1	901 008 025	4	hexagon screw without shaft
2	901 012 025	4	hexagon screw without shaft
3	905 008 000	4	spring ring
4	905 012 000	4	spring ring
5	905,108,000	4	U-disk
6	905,112,000	4	U-disk
7	906,000,520	1	retaining ring inside
8	906,000,620	2	retaining ring inside
9	906 032 000	2	retaining ring inside
10	908 008 725	1	feather key
11	908 008 732	1	feather key
12	908 010 850	1	feather key
13	909 200 162	1	tension spring
14	909 302 030	1	taper lock bushing
15	921 131 082	2	V-belt
16	921 210 125	1	V-belt pulley
17	921 210 180	1	V-belt pulley
18	921 600 035	1	taper lock bushing
19	922 202 027	1	M28 gearbox
20	924 106 007	1	ball bearings
21	924 106 205	1	deep groove ball bearings
22	924 435 627	1	shaft seal
23	924 606 006	2	ball bearings
24	925 301 025	1	clutch hub
25	941 200 080	1	clamping lever, adjustable
26	C10877	1	parking support
27	C12023	1	wave guide
28	C12065	1	tension pulley holder
29	C12546	1	spacer sleeve
30	C15118	1	drive shaft compl.
31	C15185	1	Gearbox extension complete
32	C15423	1	tension pulley
33	C15624	1	attachment for flail mowers
34	C15639	1	drive shaft compl.

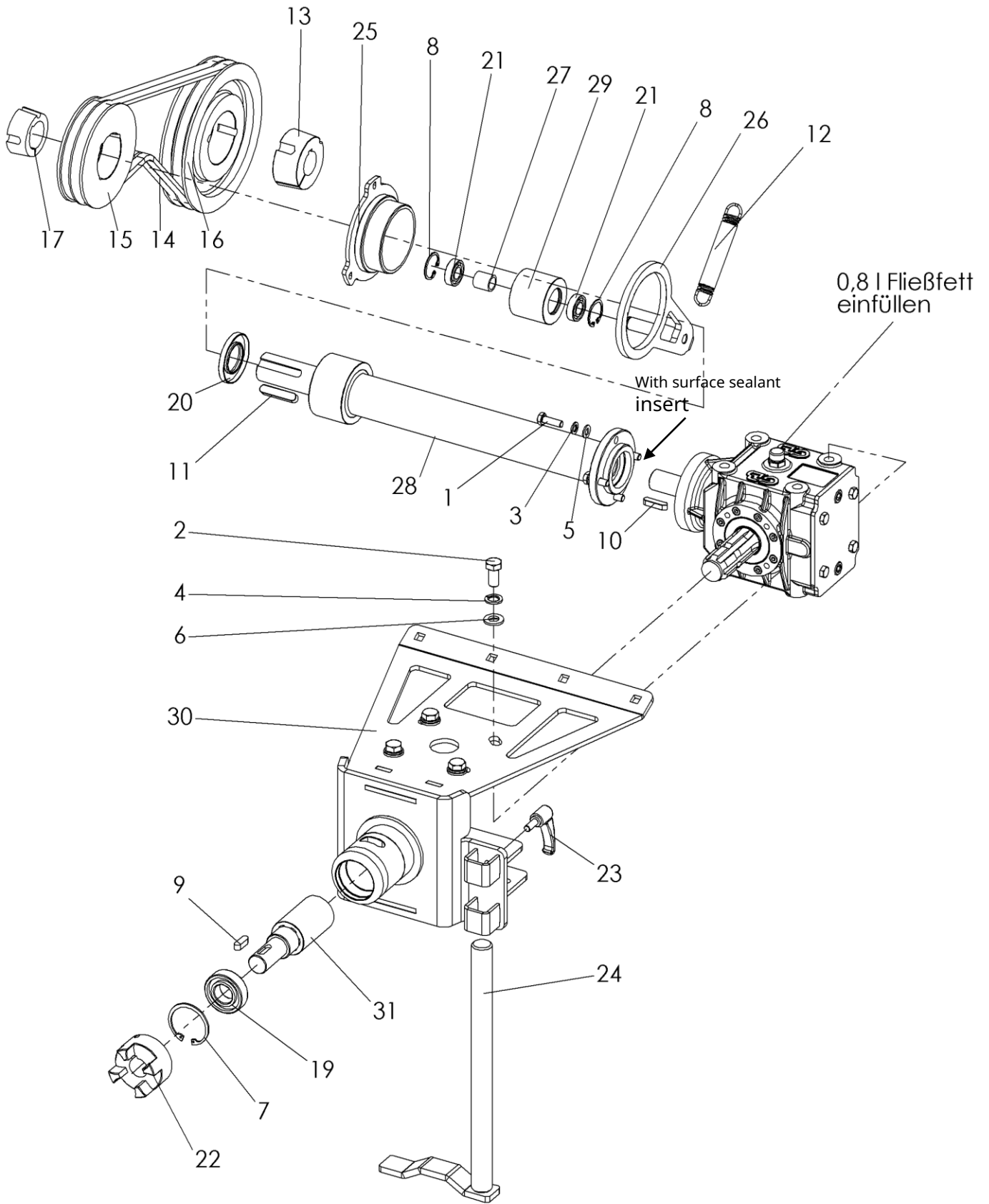
2.2.2 Drivetrain 090 AB - Variant A - C12248



Drivetrain 090 AB - Variant A - C12248

No.	Art.-No.	No.	designation
1	901 008 025	4	hexagon screw without shaft
2	901 012 025	4	hexagon screw without shaft
3	905 008 000	4	spring ring
4	905 012 000	4	spring ring
5	905,108,000	4	U-disk
6	905,112,000	4	U-disk
7	906,000,520	1	retaining ring inside
8	906 032 000	2	retaining ring inside
9	908 008 725	1	feather key
10	908 008 732	1	feather key
11	908 010 850	1	feather key
12	909 200 162	1	tension spring
13	909 302 030	1	taper lock bushing
14	921 131 082	2	V-belt
15	921 210 125	1	V-belt pulley
16	921 210 180	1	V-belt pulley
17	921 600 035	1	taper lock bushing
18	922 202 027	1	M28 gearbox
19	924 106 205	1	deep groove ball bearings
20	924 435 627	1	shaft seal
21	924 606 006	2	ball bearings
22	925 301 025	1	clutch hub
23	941 200 080	1	clamping lever, adjustable
24	C10877	1	parking support
25	C12023	1	wave guide
26	C12065	1	tension pulley holder
27	C12546	1	spacer sleeve
28	C14602	1	Extension 440 complete
29	C15423	1	tension pulley
30	C15624	1	attachment for flail mowers
31	C15639	1	drive shaft compl.

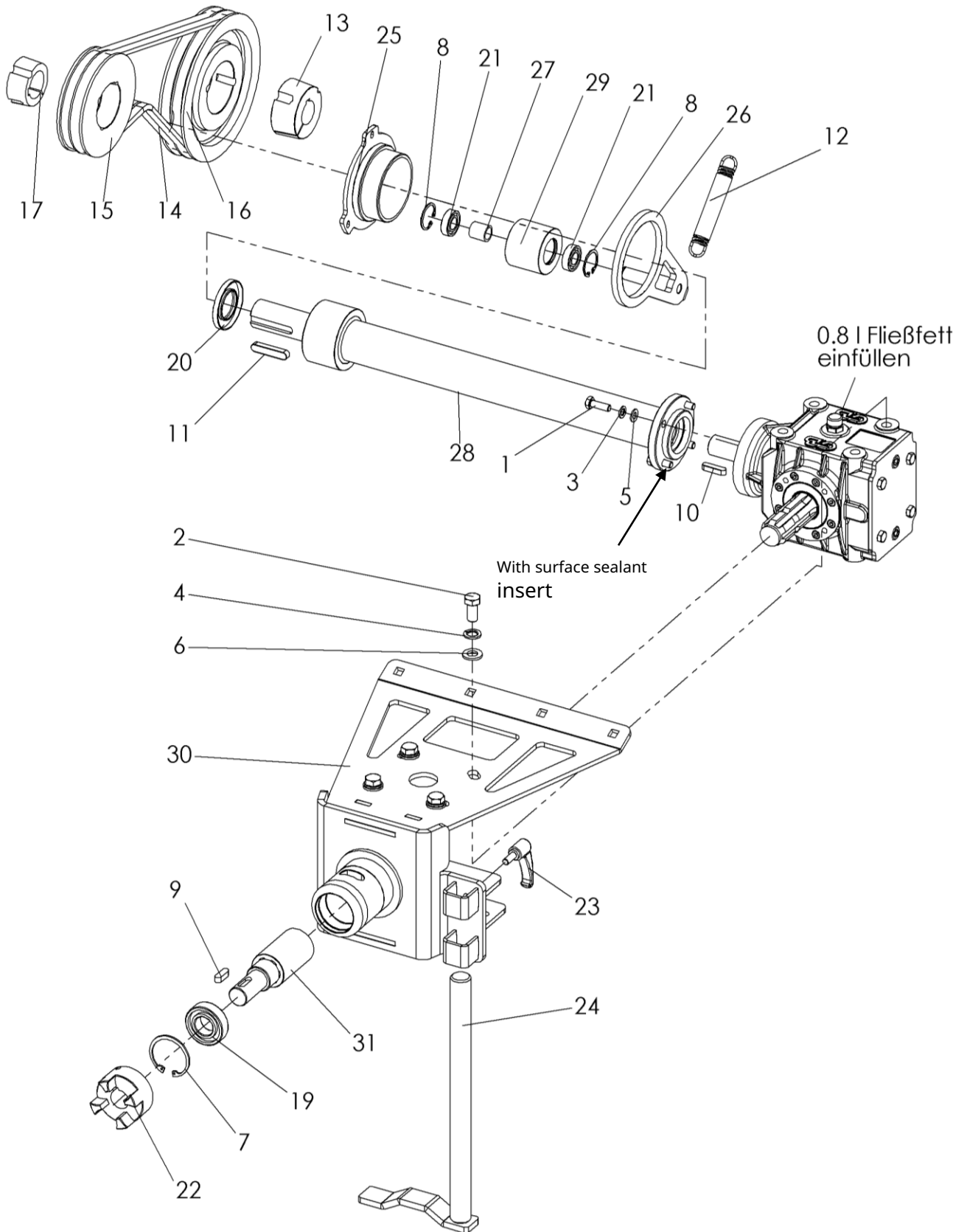
2.2.3 Drivetrain 100 AB - Variant A - C12242



Drivetrain 100 AB - Variant A - C12242

No.	Art.-No.	No.	designation
1	901 008 025	4	hexagon screw without shaft
2	901 012 025	4	hexagon screw without shaft
3	905 008 000	4	spring ring
4	905 012 000	4	spring ring
5	905,108,000	4	U-disk
6	905,112,000	4	U-disk
7	906,000,520	1	retaining ring inside
8	906 032 000	2	retaining ring inside
9	908 008 725	1	feather key
10	908 008 732	1	feather key
11	908 010 850	1	feather key
12	909 200 162	1	tension spring
13	909 302 030	1	taper lock bushing
14	921 131 082	2	V-belt
15	921 210 125	1	V-belt pulley
16	921 210 180	1	V-belt pulley
17	921 600 035	1	taper lock bushing
18	922 202 027	1	M28 gearbox
19	924 106 205	1	deep groove ball bearings
20	924 435 627	1	shaft seal
21	924 606 006	2	ball bearings
22	925 301 025	1	clutch hub
23	941 200 080	1	clamping lever, adjustable
24	C10877	1	parking support
25	C12023	1	wave guide
26	C12065	1	tension pulley holder
27	C12546	1	spacer sleeve
28	C14601	1	Extension 520 complete
29	C15423	1	tension pulley
30	C15624	1	attachment for flail mowers
31	C15639	1	drive shaft compl.

2.2.4 Drivetrain 120 AB - Variant A - C12249

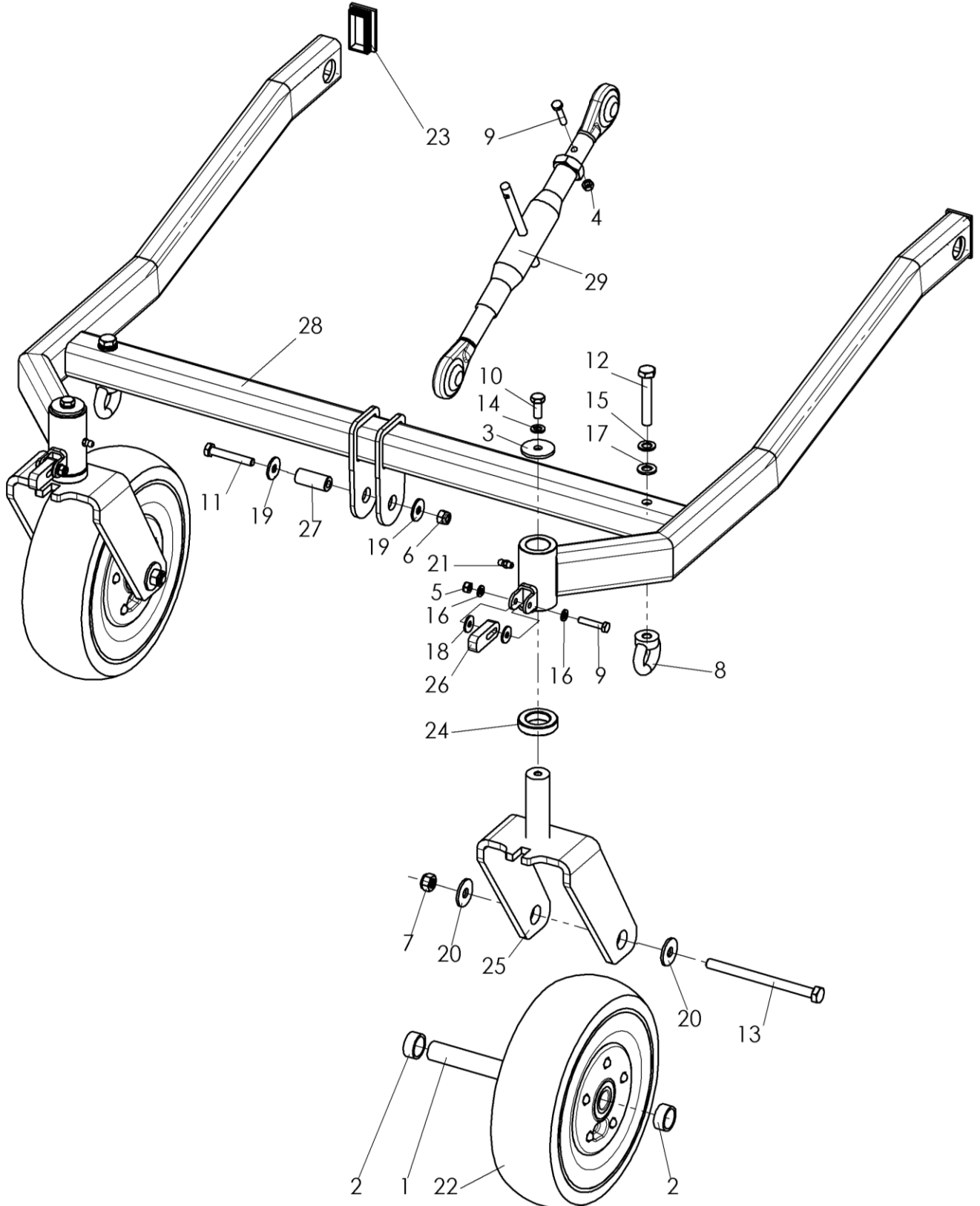


Drivetrain 120 AB Variant A - C12249

No.	Art.-No.	No.	designation
1	901 008 025	8	hexagon screw without shaft
2	901 012 025	4	hexagon screw without shaft
3	905 008 000	8	spring ring
4	905 012 000	4	spring ring
5	905,108,000	8	U-disk
6	905,112,000	4	U-disk
7	906,000,520	1	retaining ring inside
8	906 032 000	2	retaining ring inside
9	908 008 725	1	feather key
10	908 008 732	1	feather key
11	908 010 850	1	feather key
12	909 200 162	1	tension spring
13	909 302 030	1	taper lock bushing
14	921 131 082	2	V-belt
15	921 210 125	1	V-belt pulley
16	921 210 180	1	V-belt pulley
17	921 600 035	1	taper lock bushing
18	922 202 027	1	M28 gearbox
19	924 106 205	1	deep groove ball bearings
20	924 435 627	1	shaft seal
21	924 606 006	2	ball bearings
22	925 301 025	1	clutch hub
23	941 200 080	1	clamping lever, adjustable
24	C10877	1	parking support
25	C12023	1	wave guide
26	C12065	1	tension pulley holder
27	C12546	1	spacer sleeve
28	C14600	1	Extension 615 complete
29	C15423	1	tension pulley
30	C15624	1	attachment for flail mowers
31	C15639	1	drive shaft compl.

2.3 Wheel holder assembly

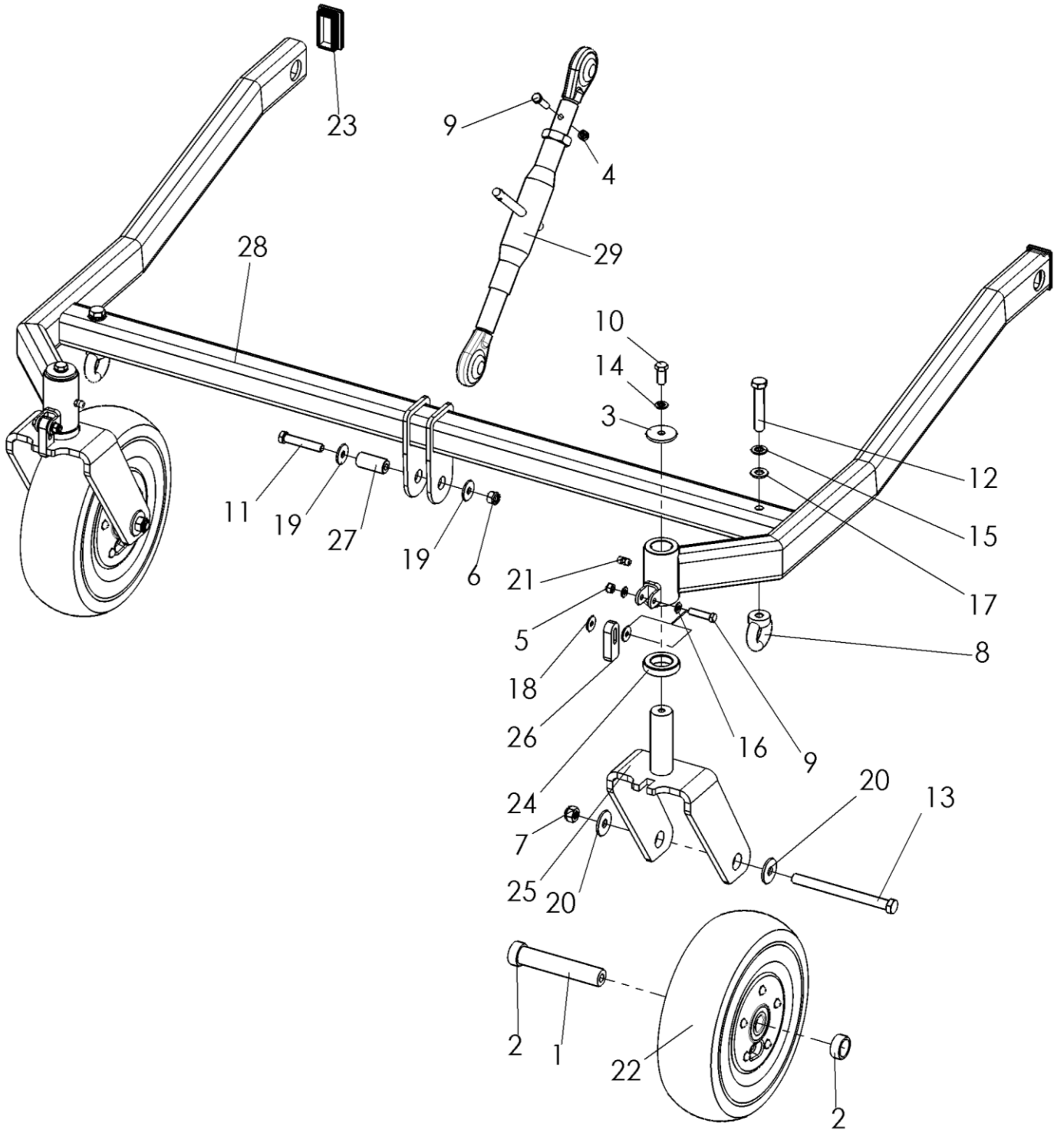
2.3.1 Wheel holder 065 AB - C15180



wheel holder 065 AB - C15180

No.	Art.-No.	No.	designation
1	705 205 113	2	wheel axle
2	705 273 115	4	spacer bushing
3	705 360 803	2	U-disk
4	900 006 001	1	Skt.-Mutter
5	900 006 002	2	lock nut
6	900 008 002	1	lock nut
7	900 010 002	2	lock nut
8	900 010 017	2	ring nut
9	901 006 030	3	hexagon screw without shaft
10	901 008 020	2	hexagon screw without shaft
11	901 108 050	1	hexagon screw with shaft
12	901 110 060	2	hexagon screw with shaft
13	901 110 130	2	hexagon screw with shaft
14	905 008 000	2	spring ring
15	905,010,000	2	spring ring
16	905,106,000	4	U-disk
17	905,110,000	2	U-disk
18	905 206 018	4	K-disk
19	905 208 025	2	K-disk
20	905,210,000	4	K-disk
21	910,006,000	2	grease nipple
22	926 154 135	2	Wheel 3.00-4 for flail mower
23	943 150 302	2	protective cap
24	950 010 006	2	spacer ring
25	C11226	2	wheel fork for 3.00-4 tires
26	C11378	2	locking pin for wheel fork
27	C11603	1	bolt
28	C15107	1	wheel holder 65 AB
29	C15727	1	top link

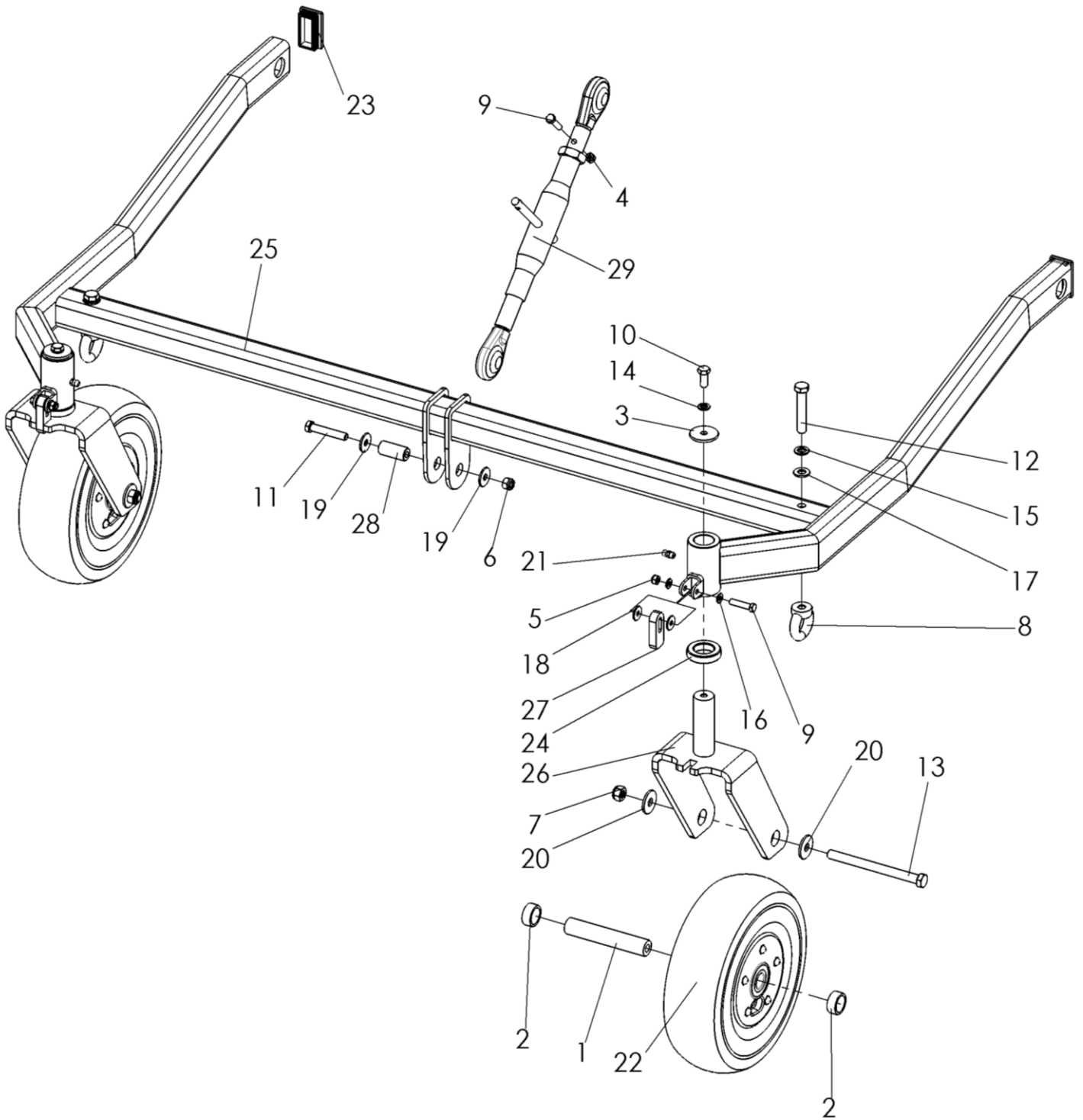
2.3.2 Wheel holder 090 AB - C12252



wheel holder 090 AB - C12252

No.	Art.-No.	No.	designation
1	705 205 113	2	wheel axle
2	705 273 115	4	spacer bushing
3	705 360 803	2	U-disk
4	900 006 001	1	Skt.-Mutter
5	900 006 002	2	lock nut
6	900 008 002	1	lock nut
7	900 010 002	2	lock nut
8	900 010 017	2	ring nut
9	901 006 030	3	hexagon screw without shaft
10	901 008 020	2	hexagon screw without shaft
11	901 108 050	1	hexagon screw with shaft
12	901 110 060	2	hexagon screw with shaft
13	901 110 130	2	hexagon screw with shaft
14	905 008 000	2	spring ring
15	905,010,000	2	spring ring
16	905,106,000	4	U-disk
17	905,110,000	2	U-disk
18	905 206 018	4	K-disk
19	905 208 025	2	K-disk
20	905,210,000	4	K-disk
21	910,006,000	2	grease nipple
22	926 154 135	2	Wheel 3.00-4 for flail mower
23	943 150 302	2	protective cap
24	950 010 006	2	spacer ring
25	C11226	2	wheel fork for 3.00-4 tires
26	C11378	2	locking pin for wheel fork
27	C11603	1	bolt
28	C12272	1	wheel holder 90 AB
29	C15727	1	top link

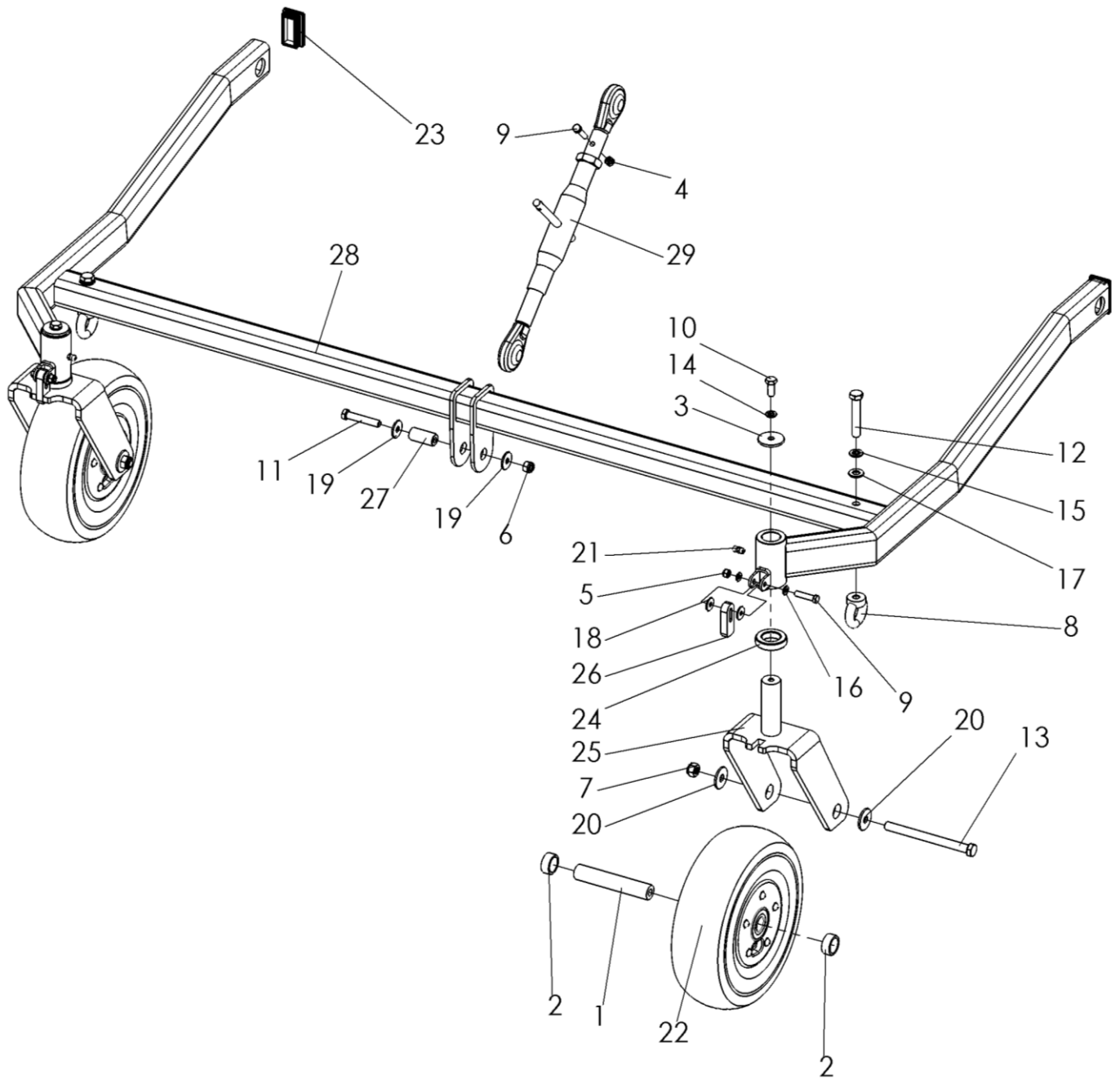
2.3.3 Wheel holder 100 AB - C12243



wheel holder 100 AB - C12243

No.	Art.-No.	No.	designation
1	705 205 113	2	wheel axle
2	705 273 115	4	spacer bushing
3	705 360 803	2	U-disk
4	900 006 001	1	Skt.-Mutter
5	900 006 002	2	lock nut
6	900 008 002	1	lock nut
7	900 010 002	2	lock nut
8	900 010 017	2	ring nut
9	901 006 030	3	hexagon screw without shaft
10	901 008 020	2	hexagon screw without shaft
11	901 108 050	1	hexagon screw with shaft
12	901 110 060	2	hexagon screw with shaft
13	901 110 130	2	hexagon screw with shaft
14	905 008 000	2	spring ring
15	905,010,000	2	spring ring
16	905,106,000	4	U-disk
17	905,110,000	2	U-disk
18	905 206 018	4	K-disk
19	905 208 025	2	K-disk
20	905,210,000	4	K-disk
21	910,006,000	2	grease nipple
22	926 154 135	2	Wheel 3.00-4 for flail mower
23	943 150 302	2	protective cap
24	950 010 006	2	spacer ring
25	C10832	1	wheel holder 100AB
26	C11226	2	wheel fork for 3.00-4 tires
27	C11378	2	locking pin for wheel fork
28	C11603	1	bolt
29	C15727	1	top link

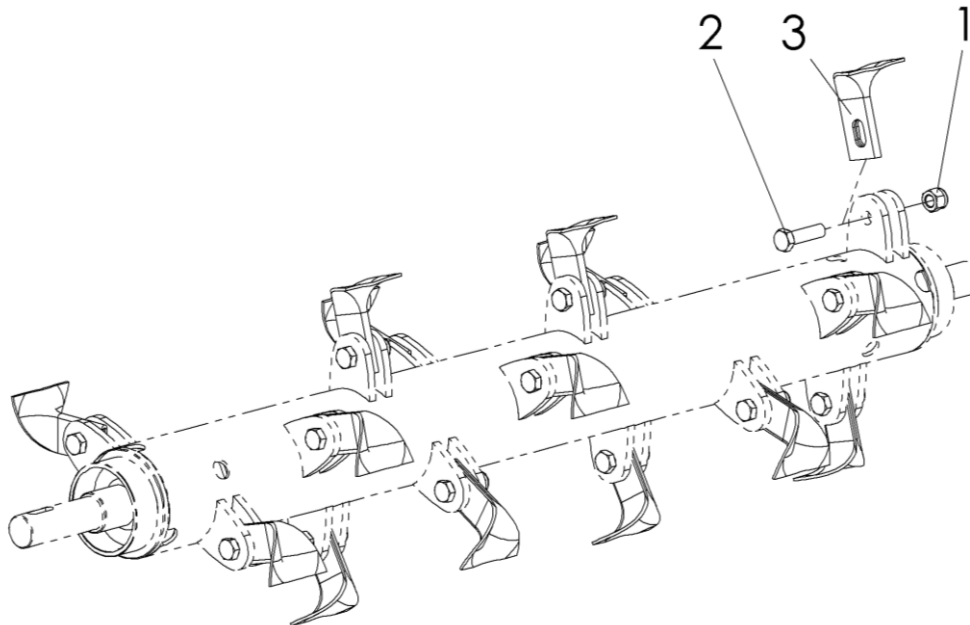
2.3.4 Wheel holder 120 AB - C12253



wheel holder 120 AB - C12253

No.	Art.-No.	No.	designation
1	705 205 113	2	wheel axle
2	705 273 115	4	spacer bushing
3	705 360 803	2	U-disk
4	900 006 001	1	Skt.-Mutter
5	900 006 002	2	lock nut
6	900 008 002	1	lock nut
7	900 010 002	2	lock nut
8	900 010 017	2	ring nut
9	901 006 030	3	hexagon screw without shaft
10	901 008 020	2	hexagon screw without shaft
11	901 108 050	1	hexagon screw with shaft
12	901 110 060	2	hexagon screw with shaft
13	901 110 130	2	hexagon screw with shaft
14	905 008 000	2	spring ring
15	905,010,000	2	spring ring
16	905,106,000	4	U-disk
17	905,110,000	2	U-disk
18	905 206 018	4	K-disk
19	905 208 025	2	K-disk
20	905,210,000	4	K-disk
21	910,006,000	2	grease nipple
22	926 154 135	2	Wheel 3.00-4 for flail mower
23	943 150 302	2	protective cap
24	950 010 006	2	spacer ring
25	C11226	2	wheel fork for 3.00-4 tires
26	C11378	2	locking pin for wheel fork
27	C11603	1	bolt
28	C11816	1	wheel holder 120 AB

2.4 Fine-cut flail set assembly



2.4.1 FEINSCHLE-SET 065 AB - S1384

No.	Art.-No.	No.	Designation 1
1	900 012 002	12	lock nut
2	901 112 043	12	hexagon screw with shaft
3	950 014 003	12	fine-cut flail

2.4.2 FEINSCHLE-SET 090 AB - S1275

No.	Art.-No.	No.	Designation 1
1	900 012 002	16	lock nut
2	901 112 043	16	hexagon screw with shaft
3	950 014 003	16	fine-cut flail

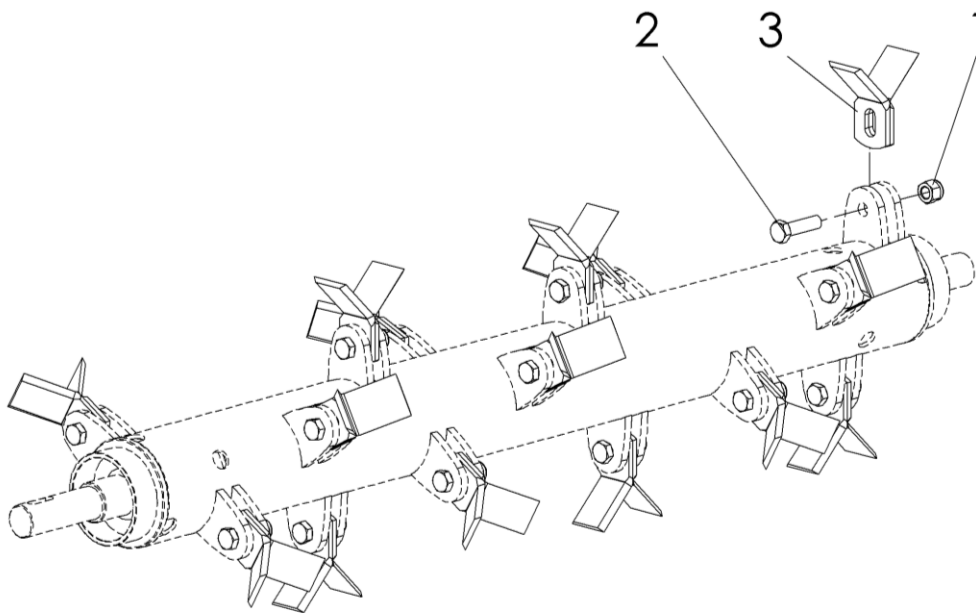
2.4.3 FEINSCHLE-SET 100 AB - S1276

No.	Art.-No.	No.	Designation 1
1	900 012 002	18	lock nut
2	901 112 043	18	hexagon screw with shaft
3	950 014 003	18	fine-cut flail

2.4.4 FEINSCHLE-SET 120 AB - S1277

No.	Art.-No.	No.	Designation 1
1	900 012 002	20	lock nut
2	901 112 043	20	hexagon screw with shaft
3	950 014 003	20	fine-cut flail

2.5 Coarse cutting flail set assembly



2.5.1 GROBSCHLE-SET 065 AB - S1383

No.	Art.-No.	No.	Designation 1
1	900 012 002		lock nut
2	901 112 043		hexagon screw with shaft
3	950 014 002		coarse cutting flail

2.5.2 GROBSCHLE-SET 090 AB - S1278

No.	Art.-No.	No.	Designation 1
1	900 012 002	16	lock nut
2	901 112 043	16	hexagon screw with shaft
3	950 014 002	32	coarse cutting flail

2.5.3 GROBSCHLE-SET 100 AB - S1279

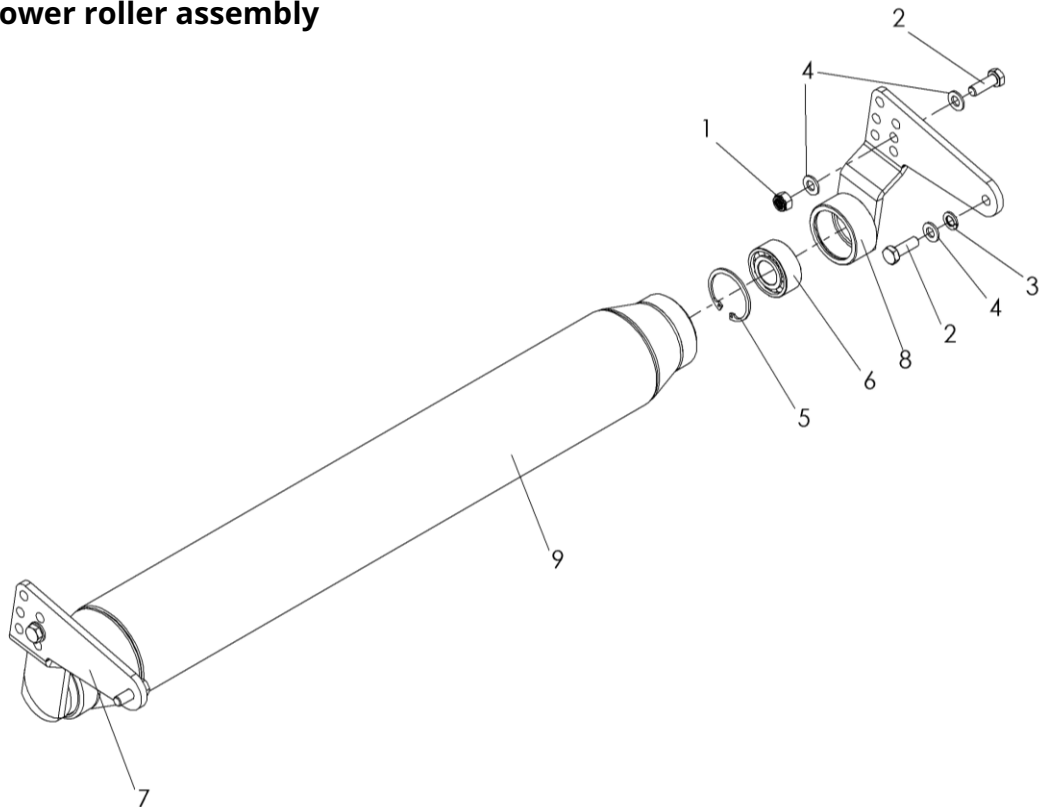
No.	Art.-No.	No.	Designation 1
1	900 012 002	18	lock nut
2	901 112 043	18	hexagon screw with shaft
3	950 014 002	36	coarse cutting flail

2.5.4 GROBSCHLE SET 120 AB - S1280

No.	Art.-No.	No.	Designation 1
1	900 012 002	20	lock nut
2	901 112 043	20	hexagon screw with shaft
3	950 014 002	40	coarse cutting flail

3 Accesories

3.1 Follower roller assembly



3.1.1 Roller for SCHLM 065 M-U70 – S1389

No.	Art.-No.	No.	designation
1	900 010 002	2	lock nut
2	901 010 030	4	hexagon screw without shaft
3	905,010,000	2	spring ring
4	905,110,000	6	U-disk
5	906,000,520	2	retaining ring inside
6	924 103 205	2	double-row angular contact ball bearings
7	C02937	1	Adjustable roller holder left, complete.
8	C02938	1	Adjustable roller holder right
9	C05102	1	Roller 065 AB complete

3.1.2 Roller for SCHLM 090 M-U70 – S1281

No.	Art.-No.	No.	designation
1	900 010 002	2	lock nut
2	901 010 030	4	hexagon screw without shaft
3	905,010,000	2	spring ring
4	905,110,000	6	U-disk
5	906,000,520	2	retaining ring inside
6	924 103 205	2	double-row angular contact ball bearings
7	C02937	1	Adjustable roller holder left, complete.
8	C02938	1	Adjustable roller holder right
9	C05104	1	Roller 090AB compl.

3.1.3 Roller for SCHLM 100 M-U70 – S1282

No.	Art.-No.	No.	Designation 1
1	900 010 002	2	lock nut
2	901 010 030	4	hexagon screw without shaft
3	905,010,000	2	spring ring
4	905,110,000	6	U-disk
5	906,000,520	2	retaining ring inside
6	924 103 205	2	double-row angular contact ball bearings
7	C02937	1	Adjustable roller holder left, complete.
8	C02938	1	Adjustable roller holder right
9	C05105	1	Roller 100AB complete

3.1.4 Roller for SCHLM 120 M-U70 – S1283

No.	Art.-No.	No.	Designation 1
1	900 010 002	2	lock nut
2	901 010 030	4	hexagon screw without shaft
3	905,010,000	2	spring ring
4	905,110,000	6	U-disk
5	906,000,520	2	retaining ring inside
6	924 103 205	2	double-row angular contact ball bearings
7	C02937	1	Adjustable roller holder left, complete.
8	C02938	1	Adjustable roller holder right
9	C02557	1	Roller 120AB complete